

# S5 AC Switch - disconnecter base mounting 3P - 3P+N

Size 2

A 500|630|800



series  
S5



CODE-500A



CODE-630A

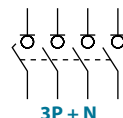
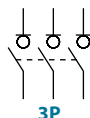


CODE-800A

3P  
3P + N  
S5-05003PRO  
S5-05003NR0

S5-06303PRO  
S5-06303NR0

S5-08003PC0  
S5-08003NC0



## Technical information

According to IEC 60947-3



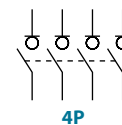
tests:



				500	630	800
Rated thermal current in ambient at	Ith	40 °C	A	500	630	800
		50 °C	A	500	630	720
		60 °C	A	500	630	640
Rated insulation voltage	Ui	V	1000	1000	1000	
Rated impulse withstand voltage	Uimp	kV	12	12	12	
AC rated operational current <sup>*(1)</sup> (Rated operational frequency 50/60 Hz)	Ie	Ue 400V AC21A	A	500	630	800
		Ue 400V AC22A	A	500	630	800
		Ue 400V AC23A	A	500	630	800
Rated breaking capacity	400V AC23	A	4000	5000	6400	
Rated making capacity	400V AC23	A	5000	6300	8000	

<sup>\*(1)</sup> Other voltages and / or utilization categories. Please consult  
<sup>\*(3)</sup> Without limiting protective device (short-circuit maintained 50... 100 ms.)

				500	630	800
<b>Short - circuit behaviour</b>						
Rated short-circuit making capacity <sup>*(2)</sup>	Icm	kA (peak)		26	26	26
Rated short-time withstand current (1sec.)	Icw	kA rms		16	16	16
<b>Mechanical features</b>						
Number of mechanical operations (according to the standards, for other values please consult)	Cycles			5000	5000	3000
Maximum weight 3P		Kg		4,2	4,2	4,2
Maximum weight 3P + N		Kg		4,5	4,5	4,5



Also available 4P switch - disconnectors under request, please consult



Accessories



» Direct handle

CODE DS-LI21



» External handle included shaft <sup>\*(e1)</sup>

IP65  
CODE DS-LA21



» External handle without shaft

IP65  
CODE DS-LA24



» Emergency external handle included shaft <sup>\*(e1)</sup>

IP65  
CODE DS-LR21



» Shafts

Standard shaft included <sup>\*(e1)</sup>

L (mm)	P (mm)
195	134... 240

Shaft extensions

Type 1		
L (mm)	P (mm)	CODE
345	134... 400	DS-EP23

Type 2		
L (mm)	P (mm)	CODE
535	134... 560	DS-EP24



» Terminal protection

CODE DS-CU22  
(1 unit for input or output)



» Terminal shrouds

CODE DS-CU21  
(1 kit for input or output)



» Auxiliary contacts

1NO+1NC CODE D5LAU01  
2NO+2NC CODE D5LAU02

I<sub>e</sub> = 16 A (resistive loads)  
4 A (inductive loads) at 250 Vac.



» Safety key lock device

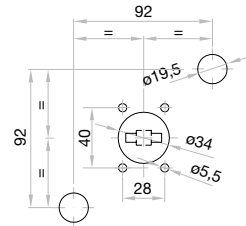
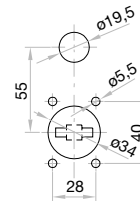
Simple CODE DS-CB21  
Double CODE DS-CF21

For external handle, lock the handle by means of a key in position "OFF" (under request, in "ON"), the key can only be removed with the handle locked

Door drilling for handle and key lock device

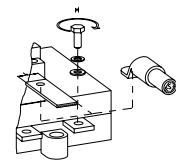
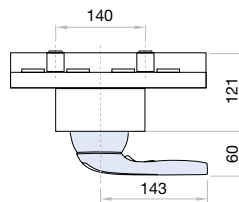
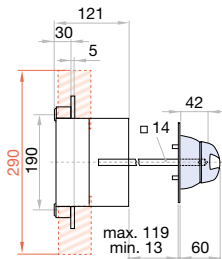
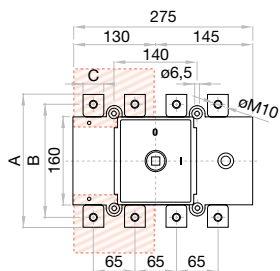
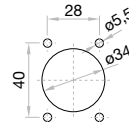
Simple

Double



Dimensions (mm)

Door drilling for external handle



	A	B	C
<b>500 A</b>	220	190	25
<b>630 A</b>	235	205	30
<b>800 A</b>			

S max (Cu)	H max (Cu)	L max (Cu)	T	M
mm <sup>2</sup>	mm	mm		Nxm
2x185	6	40	M10	24
2x240	2x5	40		
		50		